

Estoril Court

愛之居

設計者 峻佳設計 / 陳峻佳 Derek Ng Jacky Wan
參與者 Catherine Kwong 岑鳳婷 李振堂 陳銘紅 Yang 王玉 沈琳晨
蔣慧珊 蒲超豪 阮翠雲 孫佳婷 盧小敏
攝影者 廖貴衡 歐金輝
空間性質 住宅
坐落位置 中國
主要材料 義大利藝術漆、進口木飾面、大理石、皮革、特色石材
面積 94 坪

Designers Karv One Design / Kyle Chan, Derek Ng, Jacky Wan
Participant Catherine Kwong, Tain Cen, Bruce Li, Cynthia Chen, Yang, Winnie Wang, Hannah Shen, Huishan Jiang, Hao Pu, Yun Ruan, Jiating Sun, Xiaomin Lu
Photographer Dick.L, King Ou
Category Residence
Location China
Materials Special paint, wood veneer, marble, leather, stone.
Size 311m²



忠於屋主的新式豪宅設計，跳脫框架構築理想浪漫居所。

「家宅的設計，我更重視『家』而非設計。」屋主的生活方式是設計主軸，不刻意添加多餘設計，而是著重讓居住者感到舒適且愉悅。本案是位於香港的高級大廈，對於豪宅設計，陳峻佳不被市場主流所影響，而是攤開淨白畫布，讓屋主與設計師一同塗鴉繪畫，創作出獨一無二的氣質與態度。

作為香港為數不多的傳承豪宅，繁華的地理位置，一直是富豪與名流的心儀居所，向外眺望，高處的敞亮視野，將維港與太平山頂的雙重天際盡收眼底。屋主是對年輕夫妻及兩個女兒，對於有著豐富閱歷的男主人來說，家宅應結合喜好與興趣，追求「更自我的表達」，構築承載「愛的厚度」且放鬆自在的愜意居景。



Timeless 的高訂生活

建築屋齡 40 多年，雖擁有方正格局及通透採光，卻仍有不少限制。在依循舊有結構與風水智慧的基礎上，設計師重新梳理了景觀、窗、機能、動線間的關係，將實用、美和自我融入日常，提升整體幸福感，同時結合老牌豪宅底蘊，感受港人新式生活藝術，品味屋主的獨特經歷，烘托出屬於宅邸的經典氣質。

推開門那刻，燈光的魔法開啟，映入眼簾的是清雅有致的藝術前廳，玄關則以溫柔的象牙白大面鋪開，搭配雕塑感的造型擺台，根據主人心情隨意變換布置小景，當夜色降臨遠望夜景，予人極致享受。

1. 將石材、藝術漆、拼花地板、木質飾面等異材質，在巧妙的色彩搭配下，呈現無形收納的整齊視景。2. 餐廳設置壁爐為空間勾勒暖意，伴隨節慶的到來，為冷冬捎來溫馨氣息。

1. Collage of different materials such as stone, art paint, parquet flooring, and wooden veneer with clever color matching presents a neat appearance. 2. The restaurant decorates with a fireplace to create a warm and cozy atmosphere.

Kyle Chan



峻佳設計 / 陳峻佳

峻佳設計創始人，WYDF 世界青年設計師全球總冠軍，光華龍騰·中國裝飾設計業十大傑出青年，香港設計新勢力代表人物，Andrew Martin 年鑒設計師，曾獲英國餐廳酒吧設計大獎、IIDA 亞太區最佳設計獎、DFA 亞洲最具影響力設計金獎、TID Award 台灣室內設計大獎、台灣金點設計獎等多項國際大獎，並連續十年入選美國著名室內設計雜誌《Interior Design》Best of Year Awards 等。

團隊認為家宅是一種夢想的容器，吸納了居者思想、回憶、人際關係和深度生活方式。旗下 K-art 研發中心與多家畫廊和藝術機構長期合作，涵蓋繪畫、戲劇、雕塑、原創家具等，以全鏈條的資源整合能力，創造穿越經典的理想家宅。

Karv One Design / Kyle Chan

Founder of Karv One Design, WYDF World Young Designer Global Champion, Top Ten Outstanding Young People in China's Decoration Design Industry, Hong Kong's New Design Forces representative, Andrew Martin yearbook designer. Winner of the British Restaurant and Bar Design Award, IIDA Asia Pacific District Best Design Award, DFA Asia's Most Influential Design Gold Award, TID Award Taiwan Interior Design Award, Taiwan Golden Pin Design Award and many other international awards, and has been selected as Best of Year by the US interior design magazine "Interior Design" for ten consecutive years.

The team believes that the home is a container of dreams and must encompass the residents' beliefs, memories, relationships and lifestyle. K-art center has long-term collaborations with many galleries and art institutions, covering paintings, sculptures, original furniture, etc. It uses the full chain of its resource integration capabilities to create an ideal home that transcends the classics.

步入客廳，迎面而來的大面風光，框圍出日夜變換的亮麗景致、參差林立的高樓，以及山頂公園的愜意，如一幅美麗畫作般令人驚艷、沉淪。根據周圍環境規劃的客廳十分寬敞，為家人間的相處預留充足空間，佐以湛藍天際與日常相伴。與傳統全屋整裝不同的是，在此作中更注重拼貼與訂製，呈現隱藏在極簡中的極奢工藝與時間成本，而天然特色石材、藝術漆、拼花地板、木質飾面等語彙，更在細緻的色彩搭配下，將大量收納機能隱於牆內。

曲線的讚美詩

隨著柔美陽光的舒展，書房設於客廳一側，具歐式風格的拱型鐵藝細膩劃分，綿延出帶有時間痕跡的復古韻味，不僅作為場域界線，更以其獨特的藝術裝飾，成為空間亮點，此外，其兼具隱密與通透的特點，讓屋主在辦公之餘，亦可與家人互動，增加彼此連繫。

為提供極大的舒適感和實用性，空間擺設訂製手工家具，其中 HUG 擁抱椅，藉其輪廓的雕塑感與型態的流動感，搭配暖陽映照於上，濃郁的藝術氣息應運而生，構建安心自在的休憩環境。

圓桌上的家宴

在屋主的生活觀裡，餐廳是家人間分享日常與陪伴的溫馨場所，因此設計師置入訂製圓桌，以穩重優雅之姿縮短距離。圓桌旁的 B&B 餐椅安全且溫暖，上方枝形吊燈的黃銅裝飾及羊皮紙色，展現靈動雅意，當圍坐桌前，感受溫柔意蘊自然流動、蔓延。





4

3. 餐廳旁設置拱形小窗，將蔥鬱綠意的遠景及前景日常擬作畫作。4. 客廳設置大面玻璃窗，其通透感將湛藍天際及城市風景引入室內。
3. A small arched window adjacent to the dining space is set up like a painting of a lush green vista in the background. 4. The large glass openings in the living room has a transparency that brings the blue sky and scenery into the space.



5



6

餐邊櫃由石材檯面與鐵藝編織而成，富有美感的搭配透出古典氣息，旁側裝設一扇拱形小窗，宛若一幅藝術畫作，遠景是太平山的蔥鬱綠意，前景則是日常生活。另一側與拱形小窗對稱的酒櫃，滿足屋主接待親友、歡聚的需求。壁爐是餐廳的重要角色，雖在溫暖的香港使用頻率並不高，卻滿盈溫馨暖意，在冬日的聖誕節擺滿禮物，描繪充滿愛意的記憶場景。廚房選用高端廚具 **Bulthaup**，充滿人性化的做工和簡約清爽的經典美學，貫徹了屋主的欣賞理念，設計師認為，廚具不僅是家居功能，更是尊重家人間付出的見證。

靜的力量

原有主臥是大開間，經設計師重新規劃，圍塑出包裹感，營造舒適且容易入眠的情境。淺綠色的色彩搭配精細調和，營造寧靜感，同時考量風水注入「綠」、「木」、「金屬」等元素，構建凝聚的穩定氣場。兒童房簡單而溫暖，陽光從外向內延展，輕透玻璃窗納入海景，淺藍與白色帶給場域親和力與朝氣，激發孩子對未知世界的無限遐想，以及看山看海看世界的勇氣。

「不被外界定義，更忠於自己的新豪宅主義。」獨有的收納設計巧妙隱藏，融合手工藝和工業設計，飾以圓角、疊層等細膩紋理，做工精巧考究、匠心獨具，在視覺上增添了層次感與藝術感。編輯 | 林靖諺

5. 作為場域界線的拱形鐵件門，其曲線溫柔描繪勾勒溫潤，具藝術感的裝飾成為視覺亮點。6. 書房主要用作男主人辦公，搭配通透玻璃便於與家人互動，增進彼此情感。7. 客廳設置大面玻璃窗，其通透感將湛藍天際及城市風景引入室內。

5. The arched iron door with gentle curve outlines, and its artistic decoration becomes a visual highlight. 6. The study is mainly used as the male owner's office. 7. The large glass openings in the living room has a transparency that brings the blue sky and scenery into the space.



7



8

8. 餐廳擺設圓桌，讓屋主接待親友時拉近距離、增進交流機會。9.10. 廚房選用高端廚具 Bulthaup，以人性化做工搭襯簡約風韻，滿足屋主的居住美學。11. 以智能化空間系統，為「隨心而居」帶來舒享體驗，滿足不同時段下的生活情景。
8. View of the dining area. 9.10. The high-end Bulthaup kitchen system, which combines simple style and humanized workmanship aligns with the living aesthetics of the homeowner. 11. Use of an intelligent space systems brings a comfortable experience to "living as you please" to meet life scenarios at different times.

"When it comes to dwelling design, I value "home" more than design." The homeowner's lifestyle is the main focus of the design. We do not add unnecessary design because we deliberately make the residents feel comfortable and joy. This project is located in a high-end building in Hong Kong. Regarding the design of the luxury home, deviating from the mainstream market style, Chen worked closely with the owner, together they created a home with unique temperament and attitude.

As one of the few heritage mansions in Hong Kong, its prosperous location has always been the favorite residence of the rich and famous. An open view from a high level offers a panoramic view of the twin skylines of Victoria Harbor and Victoria Peak. The home is for a young couple and two daughters. For the owner, the home is a pursuit of "self-expression", and a comfortable and relaxing living environment that carries compassionate love.

A timeless custom fitted lifestyle

The existing building is more than 40 years old. Although it has a square layout and natural lighting, it still had many limitations. Adhering to the existing structure confines and Feng-Shui wisdom, the designer reorganized the relationship between views, windows, functions and circulation. Integrate practicality, beauty and personality into daily life to enhance the overall sense of happiness. At the same time, it combines the heritage of old luxury charm to create a new Hong Kong lifestyle, and the unique taste and experience of the owner highlights the classic temperament of the mansion.

建材分析 Material Analysis

1. 以鐵件搭配石材的手法，在輕重之間達到視覺平衡。2. 以「木」、「金屬」等語彙，滿足屋主的風水考量，形塑沉穩氛圍。3. 異材質間透過色彩的和諧搭襯，將機能完美隱於牆內，塑造整齊乾淨的視野。

1. Use metal paired with stone finishes to achieve a visual balance between light and heavy. 2. Apply "wood" and "metal" elements to satisfy the owner's Feng-Shui considerations and create a calm atmosphere. 3. The harmonious matching of colors of different materials, and the functions perfectly concealed within the wall create a neat and clean appearance.

溝通重點 Communication Note

1. 公領域設置大面窗景，讓湛藍優美的天際線延伸入內。2. 裝設拱形鐵門注入曲線元素，勾勒出濶潤柔美之姿。3. 以精妙的手工藝、色彩調和以及細膩紋理，讓看似簡約素淨的空間充滿輕奢質感。

1. Set up large windows in the public area to allow the beautiful blue skyline into the interior. 2. Install arched metal gate with curve elements to outline a gentle and charming look. 3. With exquisite craftsmanship, color harmony and delicate texture, the seemingly simple and plain space is filled with a graceful luxury texture.



9



10



11

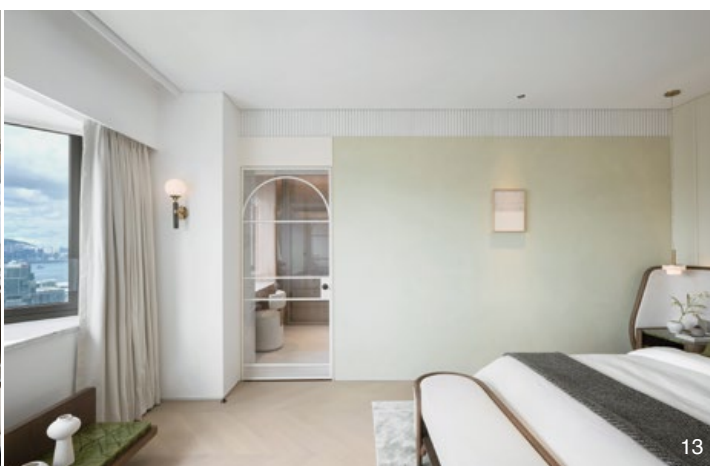
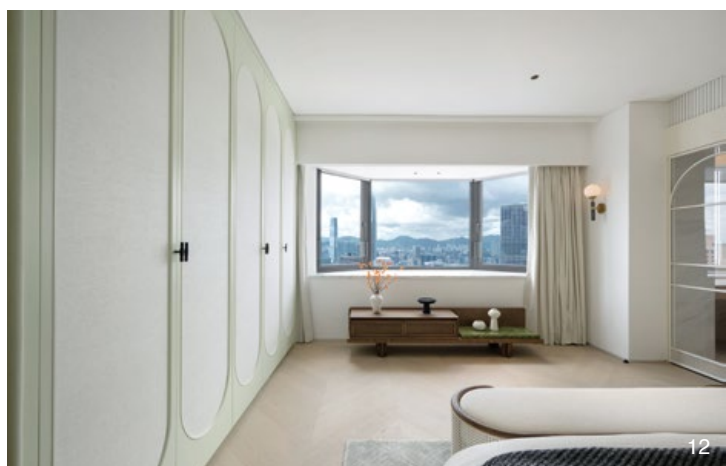
The magic of the light is turned on at the moment of opening the door, the elegant entry gallery reveals itself. The vestibule consists of a gentle ivory white surface, with a sculpture display setting that can be changed at will according to the mood of the owner. Stepping into the living room, one is immediately greeted by a large landscape scene that is as stunning and captivating as a beautiful painting.

The living room, planned according to the surrounding environment, is very spacious, offering generous space for family gatherings, accompanied by the blue sky in daily life. Different from traditional renovation project, this project paid extra attention to customization, where natural stone, artistic paint, and parquet flooring with careful color matching, displays extremely luxurious craftsmanship.

Celebrating the curves

The study room is located on one side of the living room, with delicate European-style arched iron art, extending a retro charm with traces of time. It not only serves as the boundary but also becomes the highlight of the space with its unique artistic decoration. In addition, it has the characteristics of both privacy and transparency, allowing the owner to interact with his family and increase mutual connections after work.

In order to provide great comfort and practicality, the space is furnished with custom- handmade furniture. Among them, the HUG chair, with its sculptural outline and flowing shape, combined with the warm sunlight shining upon it, creates a rich artistic atmosphere.





12-14. 主臥鋪設淺綠色調營造寧靜氛圍，塑造容易入眠的就寢環境。15. 更衣室以石材與木質調勾勒自然氣息，予人沉靜安穩之感。16. 主臥浴室延續整體風格形塑乾淨視感。17. 兒童房以簡約溫暖為主軸，鋪上淺藍與白色，為場域帶來親和力與朝氣，激發孩子想像力。

12-14. The master bedroom is finished with light green color tones to create a peaceful atmosphere that is easy to fall asleep in. 15. The dressing room uses stone and wood tones to outline a natural atmosphere for a sense of calm and stability. 16. The master bedroom bathroom design continues the overall clean elegant style. 17. The children's room focuses on simplicity and warmth, with light blue and white colors to instigate affinity and vitality to the place and stimulate the children's imaginations.

Family dinner on the round table

The owner believes the dining room is the core place for family members to share daily life and companionship, so the designer placed a custom-made round table for closer distance with a steady and elegant gesture. The brass decorative pendent light with parchment shade glows above the dining table emitting an elegant atmosphere.

The credenza is made of a stone countertop and wrought iron, the fine-looking combination exudes a classic atmosphere. The wine cabinet on the other side is symmetrical with the small arched window, which meets the owner's needs for relatives and friends entertainment and gatherings. The kitchen is finished with a high-end Bulthaup system, which is full of humanized workmanship with a simple and refreshing classic aesthetics. It implements the appreciative concept of the homeowner. The designer believes that kitchen is not only a homey function, but also a testimony of respect for family members.

The power of tranquility

The original master bedroom was a large open space, but the designer redesigned it, to form a sense of embraced space, creating a comfortable and easy-to-sleep environment. The light green color scheme was carefully coordinated to create a sense of tranquility. Judiciously adding elements such as "green", "wood", and "metal" into the design were based on Feng-Shui concepts to comprise an attentive and stable aura. The children's rooms are simple and warm, with sunlight penetrating from the outside inward, along with the seaport views. The light blue and white bring affinity and vitality to the space, inspiring the children's infinite reverie about the unknown future, and the courage to see the beautiful world.

"Liberated from the conventional definitions and be faithful to your own ideas for the new home." The cleverly hidden unique storage design incorporated artwork and product design notions and is finished with ingenious detailing and delicate textures. The exquisite workmanship enhances the visual appearance and adds a great sense of artistry to the space.

