

The Angled Home

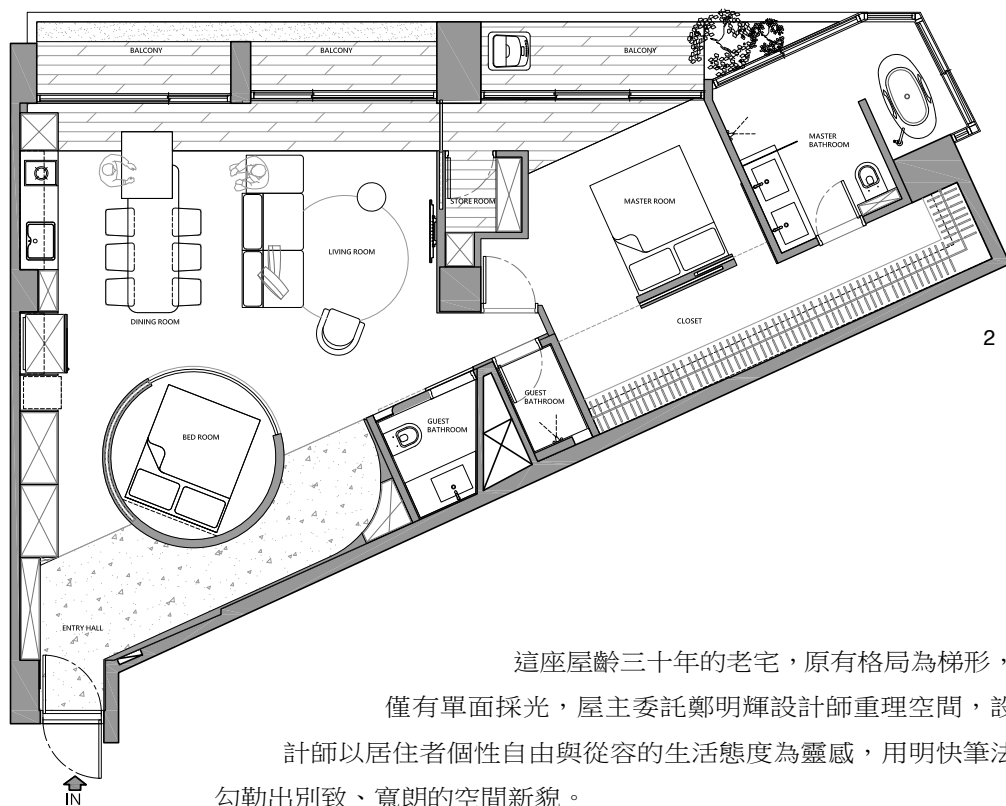
斜斜屋

設計者」 蟲點子創意設計 / 鄭明輝
攝影者」 hey!cheese
空間性質」 住宅
坐落位置」 台灣
主要材料」 塗料、木地板、鐵件、實木皮、薄磚
面積」 32 坪

Designers」 INDOT Interior Design / Armin Cheng
Photographer」 hey!cheese
Category」 Residence
Location」 Taiwan
Materials」 Paint, wood flooring, metal, wood veneer, ceramic tile
Size」 105.7m²



用曲線弱化空間銳利感，勾勒出別致、寬朗的新貌。



這座屋齡三十年的老宅，原有格局為梯形，僅有單面採光，屋主委託鄭明輝設計師重理空間，設計師以居住者個性自由與從容的生活態度為靈感，用明快筆法勾勒出別致、寬朗的空間新貌。

建構光之迴廊

格局重整上，考量居家僅需滿足兩人需求，因而以場域、視野連貫為重點，進行全局布劃。全屋整體配置，運用兩個交錯的方形塊體化解梯形平面的限制，並藉著兩個塊體分別定義出公共廳區與主臥套房，使公共區廳區重歸方正，臥房規劃得以獨立。

新布局將廚房移位並與客廳、餐廳相融，構成開放寬敞的公共廳區。設計師指出，因原建築層高偏低，且樑柱架構粗大，因此選用輕重色塊區分天花板，配以簡明筆觸勾勒出明快的空間感受，確保視覺延展不被阻斷。

Armin Cheng



蟲點子創意設計 / 鄭明輝

蟲點子主持設計師，本身是建築背景也是插畫作家的雙重身分，熱愛富有創意的事物，喜歡從生活中發掘創意及有趣的點子。在空間表現上，擅長以獨特的線條以及空間穿透感，打破原有格局框架，形塑出獨特的蟲點子風格。

作品曾獲多個獎項肯定，包括：TID Award 台灣室內設計大獎、DFA 亞洲最具影響力設計獎、新秀設計師大賽、德國 iF 設計獎、中國艾特獎 IDEA-TOPS、德國紅點產品設計獎、APIDA 亞太區室內設計大獎、TINTA 金邸獎。

INDOT Interior Design / Armin Cheng

The chief designer of INDOT Design, Cheng trained as an architect and is an illustrator. He loves creative things and likes to explore innovative and curious ideas from life. In terms of spatial expression, he is skillful at using unique lines and spatial penetration to break the existing framework and create a unique INDOT style. His works have been recognized by many awards, including: TID Award Taiwan Interior Design Award, DFA Asia's Most Influential Design Award, Rising Designer Competition, German iF Design Award, China IDEA-TOPS, and German Red Dot Product Design Award. , APIDA Asia Pacific Interior Design Award, TINTA Golden Residence Award.

1. 極大化單面採光的效益，讓窗外的光線能進入室內。2. 平面圖。

1. Maximize the benefits of single-sided lighting, allows light from outside the window to enter the room. 2. Floor plan.



3



4



3. 入口置入一座圓形量體界定玄關，並創造一座圓柱形和室。4. 玄關順應柱形和室而生的弧牆，將收納機能隱入其中。5. 用純粹的物料質感降低空間的視覺干擾。

為了最大化單面採光的效益，陽台也進行內縮、加大，使用架高的木地板連貫室內外，比鄰採光面的牆屏均與窗帶脫開，並令架高的木地板自廳區延伸至主臥，形成「光之迴廊」，連帶強化了由內而外、光影交織的視野感受。據此，窗外和煦的日光因連續性的窗帶隨之漫入，輕拂寬朗的公共廳區、透入旁側的臥室空間，讓居家徹底褪去舊昔的暗室景況，由四時常明的新境取而代之。同時，公共區域與主臥之間採用電視牆屏與背向的儲藏室合一，也利於收隱位在平面中心的結構柱，順勢將影音、置物機能歸整至同一區塊，使公共空間更顯俐落。

用曲線弱化空間銳利感

屋主希望能預留一間客房供朋友暫居之用，設計師在廳區與玄關交界處，設下圓柱造型的獨立和室，作為可彈性運用的個室。設計師提及，在入口置入一座圓形量體，作為梯形平面的中介，不僅創造可彈性使用的空間，也助於界定玄關。由於圓形量體的端然坐落，它明確了玄關作為入室序曲的意涵，既避免外部能一眼望穿家居，也分流了通往廳區與廚區的動線。玄關同時呼應著柱型和室的曲面，設計師採用柔和的弧線重塑立面，並將收納機能隱入其中，在弧形動線引導之中，不但淡化室內銳利的斜角感受，也悄悄拉長了入內進程，建立回家後沉澱心緒的儀式感。



3. A cylindrical volume is placed at the entrance to define the entry vestibule and create a cylindrical tatami room. 4. The entry vestibule follows the curved wall of the cylindrical room, hiding the storage function within. 5. The use of pure material texture reduces visual interference in the space.

圓柱形和室不僅是招待友人暫居的客臥，也是居住者日常作為遊戲、品茗、閱讀的雅室，為了完美圓柱線條，使門片吻合柱狀房型，圓弧拉門特別向鐵工訂製，並與木工配合精準施作，令成果線條流暢、外觀飽滿，體現了匠心細緻的工藝。

個性化臥室

臥房設計秉承全宅的俐落調性，採用灰黑色為底色，營造沉穩寧靜的氛圍。床頭主牆與更衣室拉門合一，既將更衣室分隔成獨立空間，也能在拉門收入牆屏後與臥房形成回字形動線，助於臥房、主臥浴室的採光、氣流暢通，同時令房內動線更加地自由、效率。

主臥浴室延續簡潔風格，灰黑色調的牆面與地板、明亮的鏡照反射，皆承襲了全作風格洗練的特色，在靜謐氛圍包裹下，不僅是一方日常梳洗之地，亦是一處心靈休憩的角落。

回顧全作，整體布局明快俐落，從場域劃分到視域延展、採光引入，一步步令老屋脫胎蛻變，不僅突破既有梯形平面的桎梏，亦為屋主創造了煥然一新的棲居之所。採訪 | 室內雜誌編輯部



6



7



8

6. 將陽台內縮加大，創造內外延伸的視覺效果。7. 廚房位移後與客餐廳整合，極大化公共空間。8. 使用深色調界定餐廚場域。9. 利用結構柱衍生的梯形空間規劃客廳。10. 採光面的牆屏與窗帶脫開，形成回字形的光廊。

6. Enlarging the balcony inward creates a visual effect of extended space. 7. The kitchen is integrated with the dining space to maximize public space. 8. The use of the dark color theme to define the dining area. 9. The use of an odd-shaped space due to the existing structure accommodates the guest toilet. 10. The wall screen on the lighting surface is separated from the window to form a continuous light corridor.

This is an existing 30-year-old house with trapezoidal plan layout and only one side with access to natural lighting. The owner commissioned designer Cheng to reorganize the space. Inspired by the owner's free and calm attitude towards life, Cheng used a clean and bright approach to depict a unique and spacious new look of the space.

Constructing a Corridor of Light

Considering that the home only required to meet the needs of two, the overall layout is carried out focusing on the continuity of the space and view. In terms of the overall configuration, two staggered square blocks form the concept to resolve the restrictions of the trapezoidal plan, and the two blocks are used to define the public area and the master bedroom suite respectively, so that the public space can be restored to a square shape, and the bedroom planning can be independent.

The new layout integrated the kitchen with the living and dining rooms to form an open spacious public zone. The designer pointed out that due to the existing low floor height and large structural elements, light and heavy color blocks were used to highlight the ceiling plane to outline a bright spatial experience to ensure that the visual extension was not blocked.

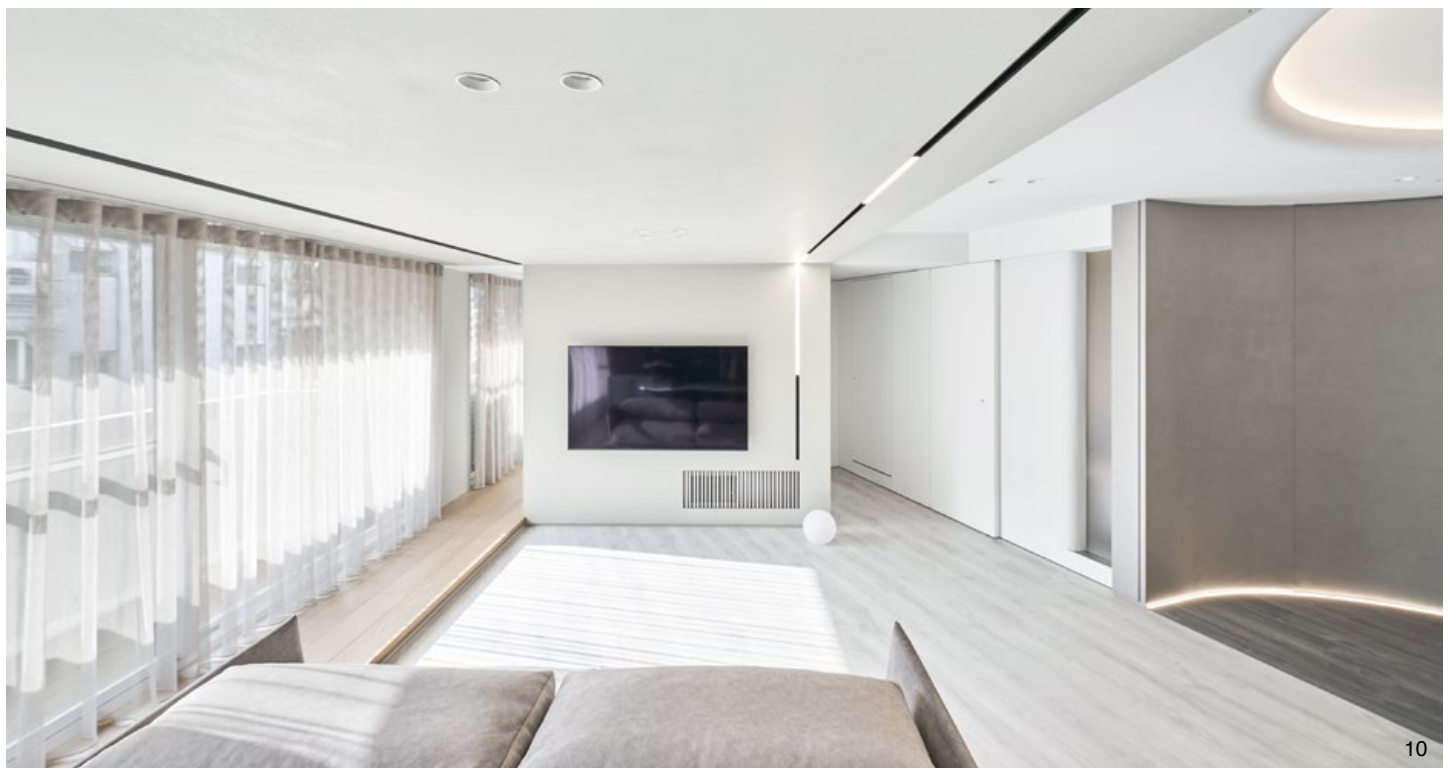
In order to maximize the benefits of single-sided lighting, the balcony was retracted and enlarged, and raised wooden floor was used to connect the indoor and outdoor areas. The wall screens adjacent to the lighting surface were detached from the window and the elevated wooden floor was separated from the living room. The area extends to the master bedroom, forming a "corridor of light" that enhances the visual experience of interweaving light and shadow from the inside out. The TV wall screen between the public area and the master bedroom is integrated with the storage space, which also helps to hide the structural column in the center of the plan and integrates the audio-visual and storage functions into the same area, this making a neater public space.



Use curves to weaken the sharpness

The owner hopes to reserve a guest room for friends to stay, so the designer set up an independent Japanese-style room located the junction of the living area and the entrance as a private room. Cheng mentioned that placing a circular volume at the entrance as an intermediary for the trapezoidal plane not only creates a space that can be flexibility used, but also helps define the entrance. It not only prevents the outside from being able to see through at a glance, but also diverts the circulation to the living area. The entry vestibule also echoes the column shape and the curved surface of the room. Guided by the curved moving lines, it not only reduces the sharp beveled feeling in the room, but also quietly lengthens it. It helps to understand the process of entering and establishes a sense of ritual that settles emotion after returning home.

The cylindrical room is not only a guest bedroom but also an elegant room for residents to play games, drink tea, and read on a daily basis. In order to perfect the cylindrical lines, the door pieces are made to fit the shape, and the curved sliding doors are custom made carpentry for precise execution, resulting in smooth lines and a full appearance, reflecting meticulous craftsmanship.

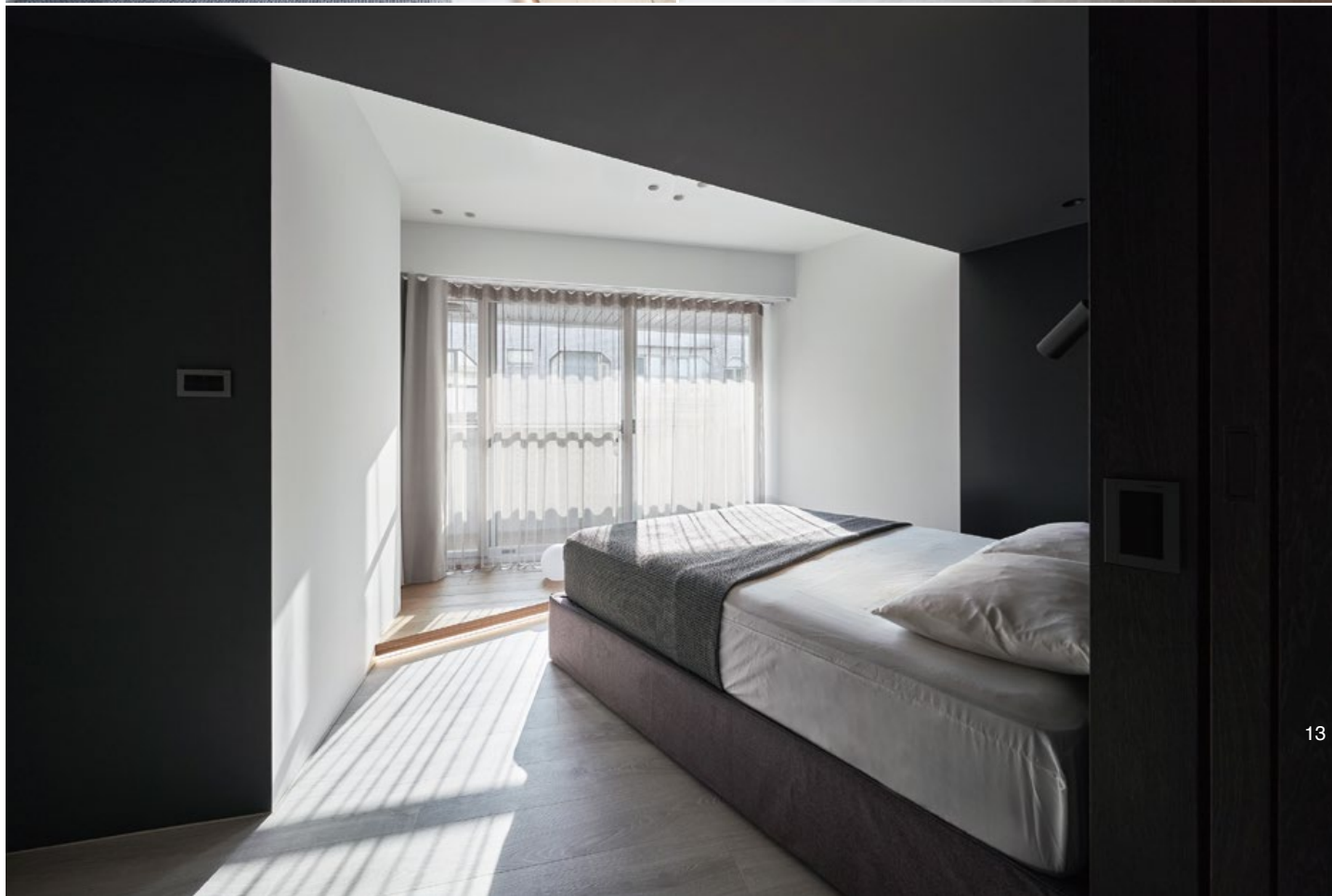
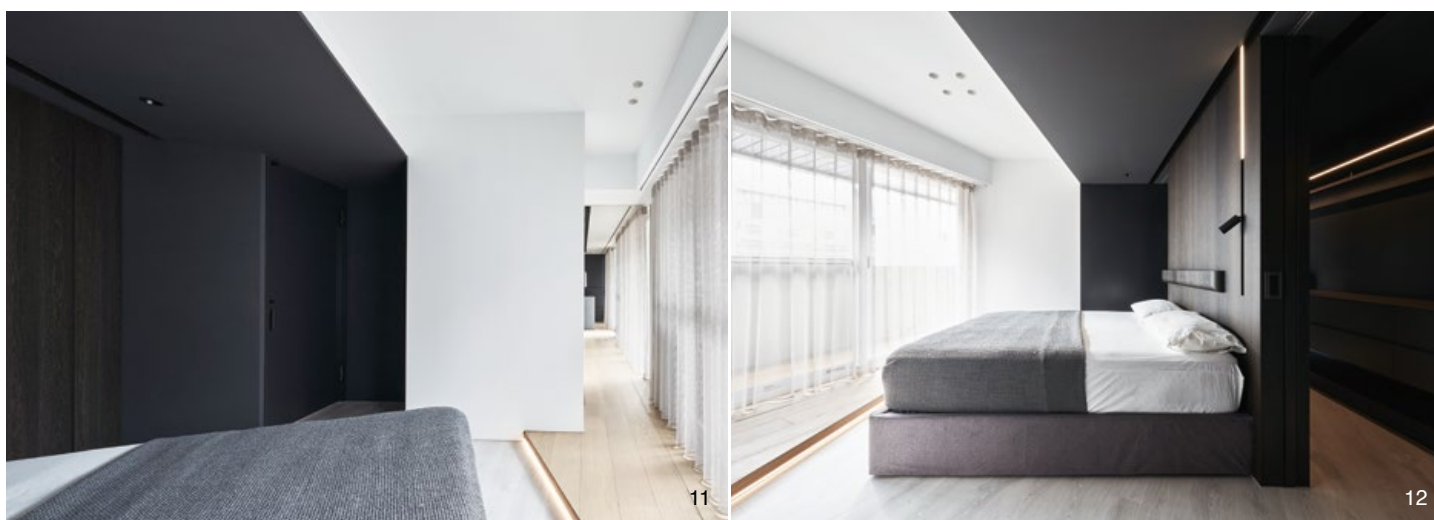


Personalized bedroom

The bedroom design adheres to the neat tonality of the project, using gray and black as the background color to create a calm and tranquil atmosphere. The bedroom head wall with an integrated sliding door not only separates the dressing room into an independent space but also forms an open flow circulation which helps the lighting and airflow of the bedroom and master bathroom, and at the same time makes the movement into the room freer and more efficient.

The master bedroom bathroom continues the simple style, with gray-black walls and flooring, and bright mirror reflections, all inheriting the refined style of the entire project. Wrapped in a quiet atmosphere, it is not only a place for daily functional needs, but also a corner for spiritual rest.

The project overall layout is bright and neat. From the functional layout to the extension of the visual field and the introduction of lighting, systematically, the old house is reborn. It breaks through the shackles of the existing trapezoidal plan and also creates a fresh living space for the owner.





14



15



16

11. 落地窗及架高地板自廳區延伸到主臥。12. 床頭主牆與更衣室拉門合一，將更衣室分隔成獨立空間，並為臥室建立回字形的動線。13. 利用明暗色塊的對比突顯建築結構特色。14. 主臥更衣室規劃多向式動線，可連至主臥衛浴。15.16. 主臥浴室延續簡潔風格。

11. The full height glazing openings and raised flooring extend from the living room into the master bedroom. 12. The master bedroom main wall is integrated with the sliding door of the dressing room, which separates the dressing room into an independent space. 13. The contrast between light and dark color was used to highlight the structural features of the building. 14. The master bedroom dressing room with multi-directional circulation connected to the master bathroom. 15.16. The master bathroom continues the simple style.

建材分析 Material Analysis

1. 塗料：純粹質感使空間俐落，降低視覺干擾。2. 木地板：提升空間溫潤舒適的感受，或作為室內外連接元素，淡化裡外隔閡。3. 訂製鐵件：特製和室門片，需吻合柱形和室的曲牆。

1. Paint: Pure texture makes the space neat and lessens visual interference. 2. Wood flooring: enhances the warmth and comfort of the space, serves as a connecting element between indoors and outdoors to reduce the distinction between interior and exterior. 3. Custom made metal accessories: Customized sliding door panel for the guest room which needed to fit the curved wall of the cylindrical Japanese style room.

溝通重點 Communication Note

1. 改善梯形空間原有斜面的缺點，淡化斜角空間的銳利感。2. 採光主要來自單面，需最大化採光效益。3. 需要規劃一間客房提供親友休息、暫住。

1. Improve the shortcomings of the existing angled trapezoidal space and diminish the sharpness of the beveled space. 2. Constrained by the existing structure with natural light coming in from only one side, the design must maximize daylight harvesting. 3. It is necessary to plan a guest room to provide temporary accommodations for visitors.