

# Villa Trigona

## 三角別墅

設計者」開物設計 / 楊竣淞 羅尤呈  
參與者」高彰孝  
攝影者」嘿！起司  
空間性質」住宅  
坐落位置」台灣  
主要材料」特殊漆、木紋、鐵件  
面積」100 坪

Designers」Ahead Concept / Chun-Sung Yang, Yu-Chen Lo  
Participant」Zhang-Xiao Gao  
Photographer」Hey!Cheese  
Category」Residence  
Location」Taiwan  
Materials」Special paint, wood veneer, steel  
Size」330.6m<sup>2</sup>



三角形基地跳脫常見的方正格局，成為全作的獨特標幟。設計師順應原屋況的稜角與斜線，機能隨形，在非對稱的空間關係中，刻鑿隨意卻和諧的生活況味。

《三角別墅》是一間獨棟別墅，如同它的名字一樣，建築本身就是一個三角形。楊竣淞設計師表示，業主為三十多歲的年輕創業家，於楊梅的半山腰自地自建專屬的生活境地，有鑑於建築結構與一般方正、注重垂直水平關係的建物截然不同，室內錯落的尖銳稜角和大膽斜線帶來一抹強烈的視覺衝擊，如何賦予特殊平面合理且順暢的動線和場域規劃，考驗著設計團隊的思維。

### 稜角斜線的自由

此作因應建物型態使內部產生了諸多稜角跟斜線，平面格局的安排可謂首要面臨的難題；另一方面，到底是要盡量收整並削弱結構的張狂力道，抑或是順應脈絡使「機能隨形」？也是設計團隊的思索要點。楊竣淞笑稱，由於基地造型已經多到無可控制的地步，乾脆順著原屋況去做，稜角與斜線雖然打亂了空間的平衡，但反而散發出一種隨意氛圍，因此反其道而行，企圖強化這種非對稱的自由秩序，描繪《三角別墅》獨樹一格的「國外感」。

在設計與施工的過程中，見證了業主單身、結婚、生子的人生里程碑，因此所有的規劃皆需適時做出回應。內部場域充分體現了建築的原有樣態，一樓主要為車庫、娛樂使用，二樓為敞朗開闊的公共空間，涵蓋了客廳、餐廚區及泳池，三樓則完全作為居者的私領域。



2

## Chun-Sung Yang, Yu-Chen Lo



開物設計 / 楊竣淞 羅尤呈

自 2007 年創立以來不停歇的突破與創新，以年輕具創意的形象在台灣備受矚目，別於主流以風格為設計初始，開物設計將每件案例視為嶄新的開端並賦予性格化的風格，以靈活的文化符碼，營造出空間的價值與深度。團隊相信一個設計之所以感動，是由剛好的比例、思想的傳遞和存在的味道，同時並存的關係，進而塑造了空間的樣貌，因此開物設計將它定義為性格化設計。重要得獎紀錄如 iF Design Award、INSIDE Award、Red Dot Award、日本 JCD BEST100、美國 IDA Award 銀獎、台灣 TID Award、韓國 K-Design Award、中國金堂獎、香港亞太設計大獎等。

Ahead Concept / Chun-Sung Yang, Yu-Chen Lo

Since 2007, the continuous growing and innovative Ahead Concept and its young and creative reputation in Taiwan interior design professions has attracted much attention. Different from the mainstream style, Ahead Concept regards each project as a new beginning and gives personalized attention, with flexible cultural symbols, to create the value and meaning of space. The team believes the relationship between the right proportions, the transmission of ideas and the taste of existence, shapes the appearance of the space, and Ahead Design defines it as a personalized design.

Important awards won include iF Design Award, INSIDE Award, Red Dot Award, JCD BEST100 Japan, IDA Award Silver Award, Taiwan TID Award, Korea K-Design Award, China JINTANG Prize, and the Hong Kong Asia Pacific Design Award.

1. 因應建物的獨特造型，設計團隊必須謹慎處理天花板之間的關係。2. 一樓平面圖。

1. Due to the unique shape of the building, the design team had to carefully manage the spatial relationships and ceiling height. 2. Ground floor plan.



3. 基地坐落於半山腰，大面的玻璃帷幕帶來了絕佳的採光及視野條件。

3. The project is located on a mountain hill with large areas of glass curtainwall that bring in excellent natural light and views.



### 素淨底色突顯特色

設計師進一步說明，三角形基地奠基於大量的玻璃帷幕，帶來了絕佳的採光優勢，在隔間區劃上頗具彈性，也令視線更具穿透感；不過，也因為過於通透與開放，導致公共及私密的場域界定較為曖昧且難以拿捏，有鑑於此，既有結構被轉化為無形的分界，例如公區柱體除身兼火爐功能外，同時也表現出客廳、餐廳與泳池之間獨立又相連的關係；亦可依循不同角度和造型形塑適度的視線阻隔，確保家庭成員的生活隱私。

綜觀全作，米白色特殊漆替居所定下了素雅氣質，再搭配乾淨簡約的淺色調木紋，營塑溫潤舒適的個性，而刻意被保留下來的稜角與線條則躍為視覺主軸，這些錯落且不對稱的造型在設計師精準的比例計算下，反而無意間平衡了空間的不平衡。另外，線性燈具亦在本案扮演了舉足輕重的角色，不僅簡化傳統的燈光配置，也增強了室內的韻律層次。楊竣淞分享，串接二、三樓的階梯因結構支撐的考量，留下一個無可避免的洞，原先計畫完全留空，但後續因業主結婚生子，增設了長虹玻璃以及欄杆扶手，保障家人行進安全之餘，依舊保有柔和光影及剪影效果。

### 開敞流動的私領域

三樓為私享空間，與主臥室連結的三角形書房是男主人工作的場所，設計師運用拉門維繫開闔彈性，而與床頭相鄰的牆面則改以玻璃語彙搭配風琴簾，滿足明亮與全遮光的場景轉換。同時，也放大主臥衛浴及更衣室尺度，讓洗沐、治裝有著更為舒心的體驗；浴室藉由冷色調襯托出高級質感，浴缸檯面身兼劃分乾濕區塊的功用，圓鏡和方形鏡櫃則交織出幾何趣味，突顯空間的簡練摩登。而小孩房浴室以拼貼方式呈現，不刻意追求磁磚對縫，粉色鋁百葉更與磁磚相映成趣，強化自然氣息。

住宅展現了居住者的個性喜好，也是繁忙生活中的一座心靈綠洲，開物設計透過靈活思維，彰顯《三角別墅》別出心裁的品味美感，在看似錯亂的稜角與斜線之間，巧妙地取得了穩定感受，讓空間盈滿衝突卻又和諧的豐富層次，交織與眾不同的生活風景。採訪 | 陳映蓁



4

4. 空間的米白色特殊漆與淺色木紋語彙捎來清爽又愜意的氣質，與窗外綠意景致相互映襯。5. 二樓平面圖。6. 三樓平面圖。7. 連結二、三樓的階梯，因結構支撐考量，形成了無法避免的三角形。玻璃的使用確保了行進的安全，同時保留剪影效果。8. 全作線性燈具多由設計師自行畫圖設計，旨在強調俐落的線條氛圍。9. 階梯特別增設玻璃與扶手欄杆，維護居家安全。

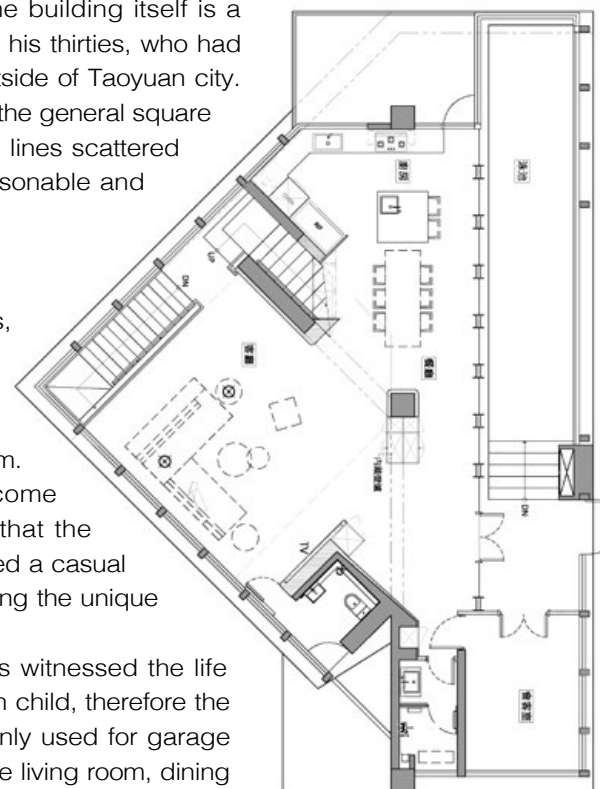
4. The beige color lacquer and light-colored wood grain vocabulary bring a refreshing and comfortable temperament, which compliments the green scenery outside the window. 5. Second floor plan. 6. Third floor plan. 7. The staircase connecting the second and third floors forms an unavoidable triangle due to structural support considerations. The use of glass ensures safety while preserving the silhouette effect. 8. Most of the light fixture were custom designed by the design team and focus on emphasizing the neat line atmosphere. 9. Glass panels and handrails were added to the stairs to enhance home safety.

"Villa Trigona" is a detached single villa, and as its name suggests, the building itself is a triangle. Designer Yang noted that the owner is a young entrepreneur in his thirties, who had built his own exclusive place on the mountainside of Yangmei district outside of Taoyuan city. In view of the fact that the existing structure was completely different from the general square and vertical and horizontal buildings, the sharp edges and bold oblique lines scattered in the interior brought a strong visual effect. How to give the plan a reasonable and smooth flow circulation was the test of the design team.

### Freedom of angular lines

In response to the shape of the building, there were many odd corners, edges and diagonal lines in the interior, and the plan layout can be described as the primary problem. Was it necessary to try to reduce the insolence of the structure, or to adapt to the context so that the "function follows the form" were the key debate points of the design team. Yang commented that because the existing building shape had become uncontrollable, he simply adopted the original condition, perceptive that the edges and diagonal lines disrupted the balance of the spaces but exuded a casual atmosphere. Yang further strengthen this asymmetrical free order, depicting the unique foreign feeling of "Villa Trigona".

In the development of the project design to construction, the designers witnessed the life milestones of the owner change from being single to forming a family with child, therefore the planning needed to respond in a timely manner. The first floor is mainly used for garage and entertainment, the second floor is an open public space, including the living room, dining and kitchen area and swimming pool, and the third floor is dedicated as the private area of the residents.



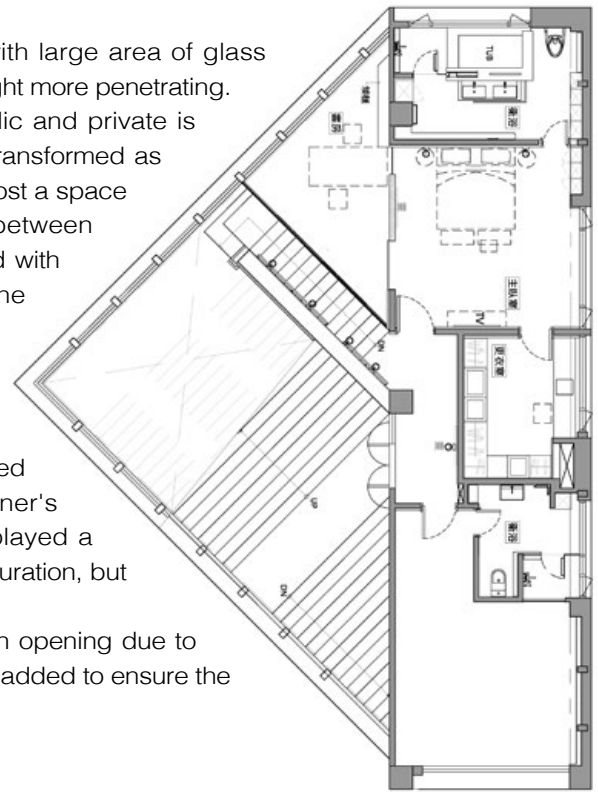
5

### The plain undertone highlights the character

The designer further explained that the triangular building enclosed with large area of glass curtainwall, brings excellent lighting advantages, also makes the line of sight more penetrating. However, due to the transparency and openness, the definition of public and private is ambiguous and difficult to grasp. Therefore, the existing structure was transformed as an invisible divider, for example, the public area column not only able to host a space heater, but also shows the independent and connected relationship between the living room, dining room and swimming pool. It could also be formed with different shapes to create a moderate obstruction of sight to ensure the privacy of family members.

The beige special paint color established the elegant temperament for the residence, and paired with simple light-toned wood grain, forms a warm and comfortable character, while the edges and lines that have been deliberately retained became the main visual effect. These staggered and asymmetrical shapes were inadvertently balanced by the designer's accurate proportional calculations. In addition, linear luminaires also played a pivotal role in this project, not only simplifying the traditional lighting configuration, but also enhancing the rhythmic level of the interior.

Yang shared that the stairs connecting the second and third floors left an opening due to structural support considerations, therefore glass panels and railings were added to ensure the safety of the family, and still retain the soft light and shadow effect.



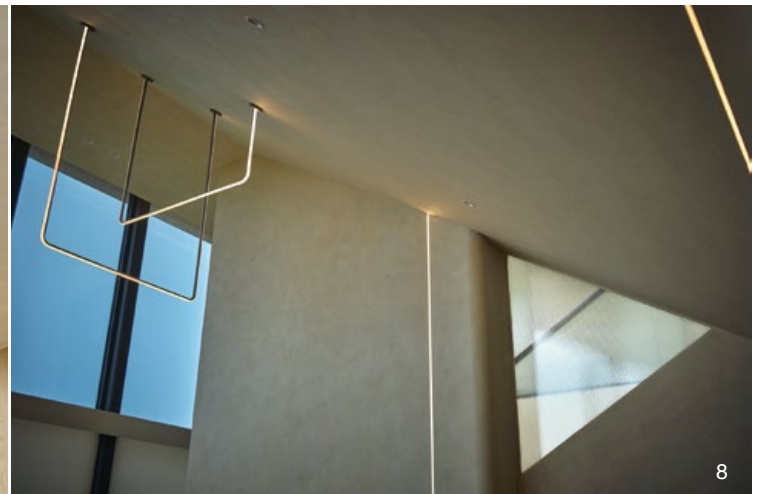
6

### Flow through the private sphere

The third floor is the designated private space. The triangular study connected to the master bedroom is the place where the couple works, the designer used sliding doors to maintain the flexibility of opening and closing, and the wall adjacent to the bedside was changed to a glass vocabulary with venetian curtains to allow for the scene transitioning between brightness and full shading.



7



8



9

10. 二樓作為主要活動場域，安排了客廳、餐廚、游泳池等機能。11. 不平衡的稜角與斜線充斥於室內，設計團隊刻意強化這種非對稱的隨意感，使其塑造一種好似身處國外的自由感。12. 以開放式策略布局平面，轉化建物柱體的存在，賦予它於無形劃分並鏈結場域的功能。13. 運用多扇門片，形塑通往游泳池及戶外庭院的通道，自由開闢的型態也讓場景有更多變化。14. 窗簾放下時的情境。線性燈具跟空間線條勾勒出極具張力的畫面。15. 柱體除作為場域分界外，也增加了火爐作用。

10. The second floor as the activity area for living room, kitchen, and swimming pool. 11. Unbalanced angles and diagonal lines pervade the interior, and the design team deliberately reinforced this asymmetrical sense of randomness, creating a sense of freedom. 12. The open plan strategy transformed the existence of the building column, and gave it the function of invisibly dividing and linking the field. 13. The use of a multi-leaf doorway to shape the passage to the outdoor courtyard, and the free openings together allow for more variations of the scene. 14. The linear luminaires and spatial lines create a highly tense image. 15. In addition to serving as the demarcation of the field, the cylinder volume also houses a fireplace.

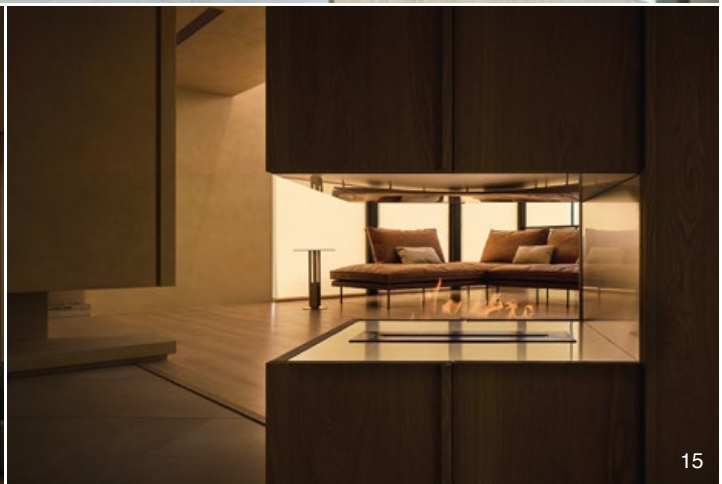




13



14



15

## 建材分析 Material Analysis

1. 整體利用簡約的淺色調木紋與米白色特殊漆，描繪住宅的典雅氣質，並彰顯結構的獨特感。2. 空間多以線性燈具作為照明使用，與錯落斜線產生有趣的呼應關係。3. 建物以大量玻璃帷幕圍塑，在窗簾的選擇上，公領域為電動捲簾，需增添導軌穩定收關。4. 私領域的書房選用風琴簾，與臥室的紗簾共創柔和朦朧的光影。

1. The use of simple light-toned wood grain and off-white special paint depicts the elegant temperament of the house and highlights the uniqueness of the structure. 2. The linear shaped light fixture throughout the space, has an interesting echoing relationship with the staggered diagonal lines. 3. The existing building enclosed with large areas of glass curtain wall need to consider light control, so the public domain has an electric roller blind, and it was necessary to add a guide rail to stabilize the closure. 4. The venetian blinds in the private study room gently filter the sunlight to create soft and hazy light and shadows.

## 溝通重點 Communication Note

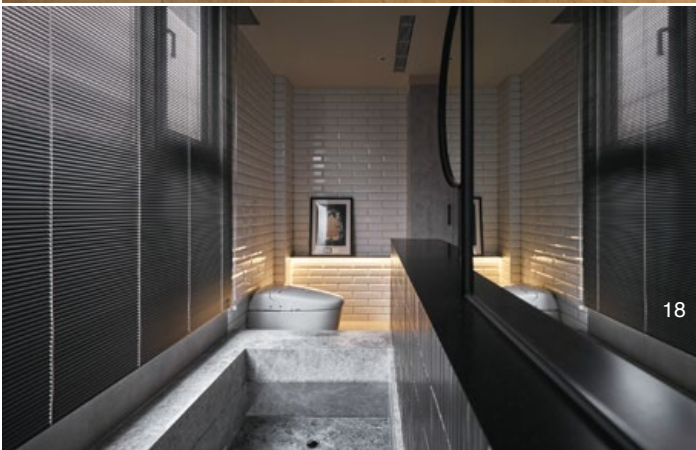
1. 建物本身特殊的三角形型態造就了室內諸多稜角與斜線，合理的平面布局成為設計團隊首要面臨的難題。2. 設計師並未刻意修正稜角斜線，反而嘗試順應原有結構，在衝突中塑造一種巧妙的平衡秩序。3. 從設計到完工的幾年時間，業主從單身進入結婚生子的另一階段，空間的彈性亦十分重要。4. 全案看似隨意，但所有比例、造型整合皆經縝密計算。

1. The existing triangular shaped building created many edges and diagonal lines in the interior, and how to create reasonable layout became the primary challenge for the design team. 2. The designer did not deliberately correct the angular and diagonal lines but tried to conform to the original structure and create a clever balance in the conflict. 3. During the time spent from design stage to construction completion, the owner moved from being single to married with a family, so the flexibility of the space was very important. 4. The project seems to be random, but all the spatial proportions and modeling integration have been carefully calculated.





The design team enlarged the scale of the master bathroom and dressing room, so that washing and dressing become more comfortable experiences. In the bathroom, cool tones accentuate the high-end texture, while the bathtub countertop serves the function of dividing wet and dry areas. Mirrored cabinets create geometric interest to highlight the simplicity and modernity of the space. The children's room is presented in a collage design, deliberately revealing the finish material joints to strengthen the natural atmosphere. The design of the home reflects the individual preferences of the occupants. It is also an oasis of the soul in a busy life. Ahead Concept highlighted the ingenuity of the "Villa Trigona" through flexible thinking, and between the seemingly chaotic edges and diagonal lines, it cleverly achieves a stable feeling, so that the space is full of contradictory but harmonious rich layers, interweaving a unique life landscape.





20



21



22

16. 小孩房衛浴以粉色鋁百葉搭配粉色磁磚。17. 三樓是居者的私領域，正中央的主臥室透過拉門與書房串連；衛浴門片則選擇暗門。18. 藉由浴缸做出無形的乾濕分離，冷色系創造了高級意象。19. 主臥衛浴的幾何造型注入時尚精緻的氛圍。20. 三樓強調空間的流動和敞亮感受。21. 利用玻璃語彙串接睡眠空間與書房。22. 書房的風琴簾飾出輕柔光線，身處其中亦可與室外和諧互動。

16. View of the child's room bathroom. 17. The third floor is the private zone for the family; the central master bedroom is connected to the study through sliding doors. 18. Separating the bathroom dry and wet zones, the cold color scheme creates a luxurious image. 19. The geometric figure of the master bedroom bathroom injects a stylish and sophisticated atmosphere. 20. Emphasis on the flow and brightness of the space. 21. Use of glass to link the sleeping space and the study. 22. The curtain in the study allows one to interact harmoniously with the outdoors.